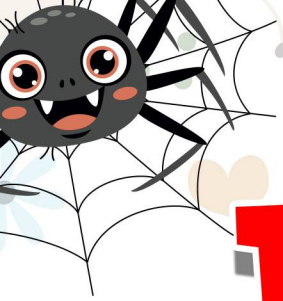


INSECTS

READING COMPREHENSION



WorksheetsPDF
TEACHING RESOURCES

Name: _____

Mantis



A mantis is a long, green insect with long front legs. The mantis moves slowly and comes close. Then, it catches its prey.

Mantis live in gardens and fields to see all around them.

Name: _____

Colorado Beetle



The Colorado beetle is a yellow and black beetle with red legs. This beetle eats leaves on potato plants. Farmers do not like it because it can destroy the crop.

In the summer, the Colorado beetle is very common. They eat a lot of leaves and start the damage.

Questions:

1. What is the Colorado beetle?

WorksheetsPDF
TEACHING RESOURCES

Name: _____

Spider



A spider has eight legs and two body parts. It can be black, brown, or colorful. Spiders make webs to catch insects. They use their silk to build their homes.

Some spiders are very small, and some are big. Spiders live in houses, gardens, and forests. They help farmers by eating mosquitoes and flies.

Questions:

1. How many legs does a spider have?

2. What do spiders use to make webs?

- a) Silk
- b) Leaves
- c) Leaves
- d) Water

WorksheetsPDF
TEACHING RESOURCES

Name: _____

African Black Beetle



The African black beetle is a hard beetle.

WorksheetsPDF
TEACHING RESOURCES

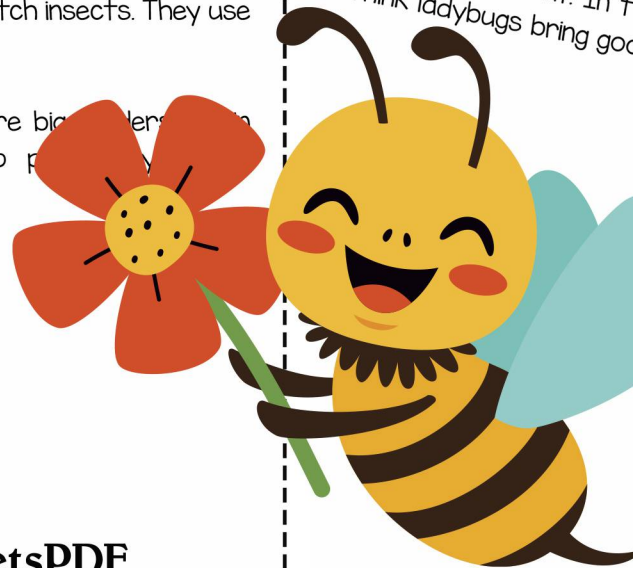
Name: _____

Ladybug



A ladybug is a small insect with black spots. It lives in gardens and eats tiny insects and helps plants grow.

Ladybugs move from plant to plant. In the garden, you can think ladybugs bring good news.



Ladybug



A ladybug is a small, red insect with black spots. It has six legs and two wings. Ladybugs live in gardens and eat tiny bugs called aphids. They are friendly insects and help plants grow.

Ladybugs can fly and move from plant to plant. In the winter, they sleep under leaves. People think ladybugs bring good luck.

Questions:

What color is a ladybug?

- a) Blue
- b) Green
- c) Red
- d) Yellow

What do ladybugs eat?

- a) Leaves
- b) Aphids
- c) Flowers
- d) Grass

Where do ladybugs sleep in the winter?

- a) Under leaves
- b) In the water
- c) On flowers
- d) In the sky

Colorado Beetle



The Colorado beetle is yellow and black. It has a round body and short legs. This beetle lives on potato plants and eats their leaves. Farmers do not like it because it can destroy crops.

In the summer, the Colorado beetle lays eggs on leaves. The baby beetles eat a lot and grow quickly. They become adult beetles and start the cycle again.

Questions:

What color is the Colorado beetle?

- a) Yellow and black
- b) Red and white
- c) Green and brown
- d) Blue and silver

Where does the Colorado beetle live?

- a) On potato plants
- b) In the water
- c) Under rocks
- d) On trees

Why do farmers not like the Colorado beetle?

- a) It makes noise
- b) It destroys crops
- c) It flies away
- d) It eats flowers

African Black Beetle



The African black beetle is shiny and black. It has a hard body and strong legs. This beetle eats plants and grass, and sometimes it damages crops. It is most active at night.

This beetle cannot fly, but it moves fast on the ground. It hides under soil and leaves during the day. Many birds and small animals eat this beetle.

Questions:

What color is the African black beetle?

- a) Green
- b) Blue
- c) Black
- d) Red

When is the African black beetle most active?

- a) In the morning
- b) At night
- c) In the afternoon
- d) During winter

Where does the African black beetle hide?

- a) Under soil and leaves
- b) On tree branches
- c) In the water
- d) Inside flowers

Mantis



A mantis is a long, green insect. It has two big eyes and strong front legs. The mantis moves slowly and waits for insects to come close. Then, it catches them very fast.

Mantises live in gardens and forests. They can turn their heads to see all around them. Some people keep mantises as pets.

Questions:

What color is a mantis?

- a) Red
- b) Yellow
- c) Green
- d) Blue

What do mantises eat?

- a) Fruits
- b) Small insects
- c) Leaves
- d) Flowers

Where do mantises live?

- a) In water
- b) In gardens and forests
- c) In houses
- d) On the beach

Spider



A spider has eight legs and two body parts. It can be black, brown, or colorful. Spiders make webs to catch insects. They use their silk to build their homes.

Some spiders are very small, and some are big. Spiders live in houses, gardens, and forests. They help people by eating mosquitoes and flies.

Questions:

How many legs does a spider have?

- a) Six
- b) Four
- c) Eight
- d) Ten

What do spiders use to make webs?

- a) Silk
- b) Grass
- c) Leaves
- d) Water

Where do spiders live?

- a) Only in water
- b) In houses, gardens, and forests
- c) On the moon
- d) Inside rocks

Stick Bug



A stick bug is a long, thin insect. It looks like a stick or a small branch. This helps it hide from birds and other animals. Stick bugs can be green or brown.

They move very slowly and stay still for a long time. Some stick bugs can even lose a leg and grow it back later. They live in trees and bushes.

Questions:

What does a stick bug look like?

- a) A leaf
- b) A rock
- c) A stick
- d) A flower

Why do stick bugs look like sticks?

- a) To scare people
- b) To hide from animals
- c) To find food
- d) To run fast

Where do stick bugs live?

- a) In trees and bushes
- b) In water
- c) In houses
- d) In the sand

Honey Bee



A honey bee is a small, yellow and black insect. It has wings and six legs. Bees fly from flower to flower to collect nectar. They use the nectar to make honey.

Bees live in big groups called colonies. They work together to protect their home, called a hive. Bees are very important for nature because they help plants grow.

Questions:

What do honey bees collect from flowers?

- a) Water
- b) Grass
- c) Nectar
- d) Leaves

Where do bees live?

- a) In hives
- b) In the ocean
- c) In caves
- d) Under rocks

Why are bees important for nature?

- a) They make noise
- b) They help plants grow
- c) They eat insects
- d) They fly very fast

Fly



A fly is a small insect with two wings. It can be black, brown, or green. Flies move very fast and can land on food, water, and animals.

Flies can live in houses and outside. They eat fruit, sugar, and even garbage. Some flies can spread germs, so people do not like them inside their homes.

Questions:

How many wings does a fly have?

- a) Four
- b) Two
- c) Six
- d) Eight

What do flies eat?

- a) Only leaves
- b) Only water
- c) Fruit, sugar, and garbage
- d) Only meat

Where can flies live?

- a) Only in the forest
- b) Only under the ground
- c) In houses and outside
- d) Only in water

Ant



An ant is a small insect with six legs. It is usually black or red. Ants live in groups called colonies. They work together to find food and build their homes underground.

Ants are very strong. They can carry things bigger than their own bodies. Some ants can bite, but most are harmless. They help clean the environment by eating dead insects and plants.

Questions:

What color can ants be?

- a) Red and black
- b) Blue and purple
- c) Yellow and white
- d) Green and pink

Where do ants live?

- a) Alone in trees
- b) In groups called colonies
- c) In water
- d) On the moon

What do ants do to help the environment?

- a) Eat dead insects and plants
- b) Fly in the sky
- c) Drink honey
- d) Sleep all day

Carabidae



Carabidae are fast, shiny beetles. They can be black, brown, or metallic green. These beetles have long legs and strong jaws. They live under rocks, leaves, and in the soil.

Carabidae eat other small insects. They help farmers by eating bugs that harm plants. Some Carabidae beetles can release a bad smell to protect themselves from predators.

Questions:

What do Carabidae beetles eat?

- a) Leaves
- b) Small insects
- c) Flowers
- d) Fruit

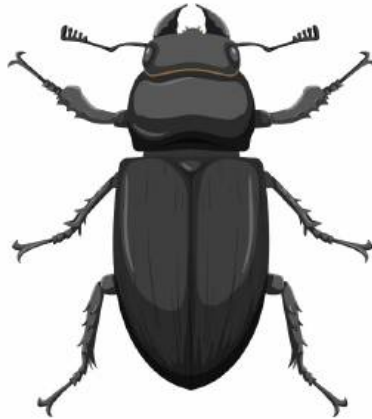
Where do Carabidae beetles live?

- a) Under rocks and leaves
- b) In water
- c) In houses
- d) On tree branches

How do Carabidae beetles protect themselves?

- a) They run away fast
- b) They make a bad smell
- c) They jump very high
- d) They fly long distances

Metallic Dung Beetle



The metallic dung beetle is a shiny insect with a hard body. It is usually green, blue, or bronze. This beetle lives in forests and fields, where it eats animal waste.

The dung beetle is very strong. It rolls balls of dung and buries them in the ground. This helps clean the environment and makes the soil better for plants.

Questions:

What color can a metallic dung beetle be?

- a) Green, blue, or bronze
- b) Red and white
- c) Black and pink
- d) Yellow and orange

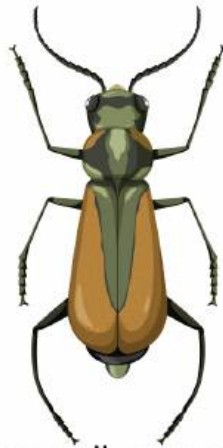
What does the dung beetle eat?

- a) Leaves
- b) Animal waste
- c) Fruits
- d) Flowers

How does the dung beetle help the environment?

- a) It eats other insects
- b) It cleans animal waste
- c) It makes honey
- d) It scares animals

Malachius Aeneus



The Malachius aeneus is a small, green beetle with red or orange markings. It has soft wings and long antennae. This beetle lives in gardens and fields.

It eats pollen and small insects. Farmers like this beetle because it helps control pests that harm crops. It is active during warm months.

Questions:

What color is the Malachius aeneus?

- a) Black and white
- b) Green with red or orange
- c) Blue and yellow
- d) Purple and brown

Where does this beetle live?

- a) In gardens and fields
- b) In the ocean
- c) In dark caves
- d) In deserts

Why do farmers like the Malachius aeneus?

- a) It controls pests
- b) It eats potatoes
- c) It makes honey
- d) It sings at night

Titanus Giganteus



The *Titanus giganteus* is one of the largest beetles in the world. It can grow up to 17 cm long. It has a strong body, large jaws, and dark brown wings.

This beetle lives in tropical forests. It does not eat much as an adult. It mostly uses its powerful jaws to defend itself from predators.

Questions:

How big can a *Titanus giganteus* grow?

- a) 5 cm
- b) 10 cm
- c) 17 cm
- d) 2 cm

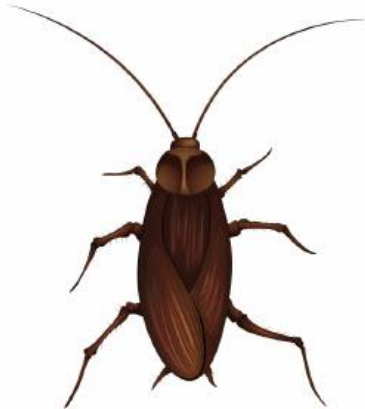
Where does this beetle live?

- a) In deserts
- b) In tropical forests
- c) In houses
- d) In rivers

What does the *Titanus giganteus* use its jaws for?

- a) To eat leaves
- b) To defend itself
- c) To dig tunnels
- d) To build nests

Cockroach



A cockroach is a brown or black insect with long legs and two antennae. It can move very fast. Cockroaches live in dark and warm places, such as kitchens and basements.

Cockroaches eat almost anything, including food, paper, and even glue. They are very strong insects and can survive in difficult conditions.

Questions:

What color can a cockroach be?

- a) Green and blue
- b) Brown and black
- c) Red and yellow
- d) White and silver

Where do cockroaches live?

- a) In cold, open spaces
- b) In dark and warm places
- c) Underwater
- d) In the snow

What do cockroaches eat?

- a) Only leaves
- b) Almost anything
- c) Only fruits
- d) Only honey

Cicada



A cicada is an insect with big eyes and transparent wings. It is famous for making loud sounds. Cicadas live in trees and bushes.

These insects spend most of their lives underground. When they grow, they come out and climb trees. They sing to find a mate and then lay eggs on tree branches.

Questions:

What is special about cicadas?

- a) They are silent
- b) They make loud sounds
- c) They glow in the dark
- d) They can swim

Where do cicadas spend most of their lives?

- a) Underground
- b) In the ocean
- c) In houses
- d) In flowers

Why do cicadas sing?

- a) To call their friends
- b) To find a mate
- c) To scare birds
- d) To warn other insects

Amblypygi



The Amblypygi is a special type of spider. It has long, thin legs and can move very fast. It does not have venom and is harmless to people.

This insect lives in caves and dark places. It hunts small bugs at night. Some people call it a “whip spider” because of its long legs.

Questions:

What is the Amblypygi?

- a) A type of spider
- b) A beetle
- c) A butterfly
- d) A bee

Where does the Amblypygi live?

- a) In the ocean
- b) In caves and dark places
- c) In trees
- d) In houses

Why is it called a “whip spider”?

- a) It makes a loud sound
- b) It has long legs
- c) It jumps very high
- d) It glows in the dark

Pieris Rapae



The Pieris rapae is a small, white butterfly. It has black spots on its wings. This butterfly is common in gardens and fields.

It drinks nectar from flowers and lays eggs on cabbage plants. The caterpillars eat the leaves before turning into butterflies.

Questions:

What color is the Pieris rapae?

- a) Black
- b) White
- c) Green
- d) Blue

What do Pieris rapae caterpillars eat?

- a) Leaves
- b) Honey
- c) Wood
- d) Insects

Where does this butterfly lay its eggs?

- a) On cabbage plants
- b) In the water
- c) On rocks
- d) In the soil

Goliath Beetle



The Goliath beetle is one of the biggest beetles in the world. It is black and white, with strong legs and a hard body. It can grow as big as a human hand.

These beetles live in forests and eat fruit and tree sap. Male Goliath beetles use their horns to fight other males.

Questions:

How big can a Goliath beetle grow?

- a) As small as a fly
- b) As big as a human hand
- c) As small as a ladybug
- d) As big as a mouse

What do Goliath beetles eat?

- a) Fruit and tree sap
- b) Fish
- c) Grass
- d) Other beetles

Why do male Goliath beetles fight?

- a) To defend their home
- b) To find food
- c) To win a mate
- d) To escape from birds

Scorpion



A scorpion is an insect with a long tail and sharp pincers. It can be black, brown, or yellow. Some scorpions have venom and can sting to protect themselves.

Scorpions live in deserts, forests, and caves. They hunt small insects at night. They glow under UV light, which makes them easy to see in the dark.

Questions:

What is special about a scorpion's tail?

- a) It is short and soft
- b) It has a venomous sting
- c) It is colorful
- d) It has wings

Where do scorpions live?

- a) In deserts, forests, and caves
- b) In the ocean
- c) In the snow
- d) In cities

What happens under UV light?

- a) Scorpions glow
- b) Scorpions turn red
- c) Scorpions disappear
- d) Scorpions grow bigger

Butterfly



A butterfly is a colorful insect with big wings. It can be blue, yellow, orange, or many other colors. Butterflies start as caterpillars. After some time, they turn into beautiful butterflies.

Butterflies drink nectar from flowers. They help plants grow by carrying pollen. Some butterflies travel long distances to find warm places.

Questions:

What do butterflies drink?

- a) Water
- b) Nectar
- c) Milk
- d) Juice

How do butterflies help plants?

- a) They carry pollen
- b) They eat leaves
- c) They make honey
- d) They dig in the soil

What do butterflies start as?

- a) Small birds
- b) Caterpillars
- c) Beetles
- d) Spiders